

Trans-Texas Corridor

AASHTO
Standing Committee on Rail
Transportation

San Antonio, Texas
September 12, 2006



Jack E. Heiss, P.E.
Advanced Project Development
Director

Texas Department of
Transportation

Texas Turnpike Authority
Division





What's the Trans-Texas Corridor ?

What's rail got to do with it ?



What's the Trans-Texas Corridor ?



Texas Crossroads Plan – 2002

Statewide System

Multi-mode transportation

Rubber-tire, utilities, and rail

2 corridors under Environmental Review

TTC-35

I-69/TTC



Multi-mode transportation

At build-out:

6 lanes Automobile

4 lanes Truck

2 tracks High Speed Rail

2 tracks Commuter Rail

2 tracks Freight Rail

200 ft Utilities

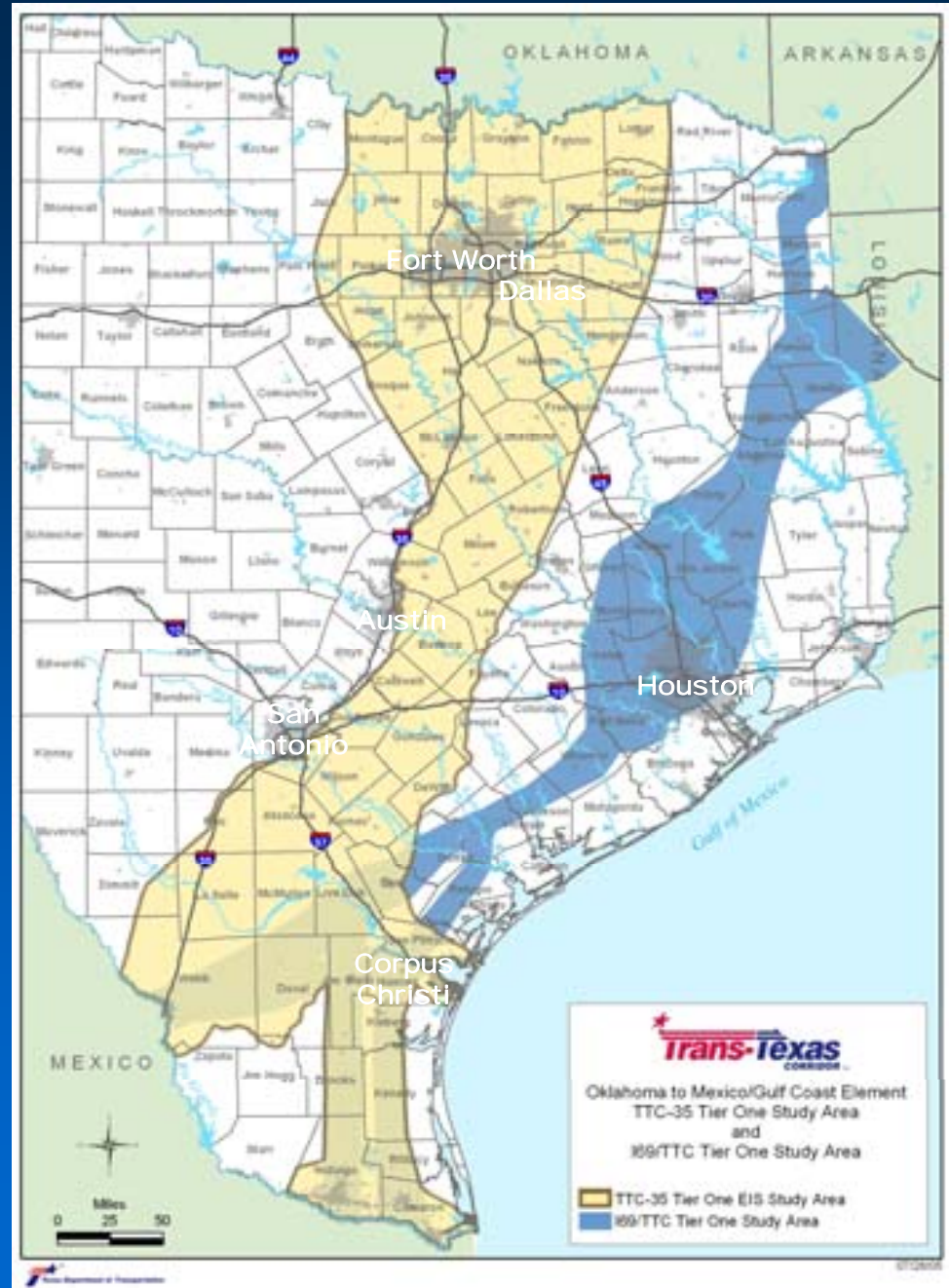




2 corridors under Environmental Review

TTC-35

I-69/TTC





Status

Two-Tier Environmental Study

- TTC-35
 - Tier One DEIS released, hearings complete
- I-69/TTC
 - Tier One DEIS expected late 2006, hearings in Spring 2007

What does a Tier One R.O.D. get ?



Project Finance

Comprehensive Development Agreement

Concession Finance Model

TxDOT & Developer plan system

Developer provides capital*

Developer collects tolls up to 50 years

State ultimately shares in revenue

Advantages of CDAs

- New transportation options, faster
- For a concession, the Developer would typically:
 - Pay concession fees upfront
 - Pay right of way and facility
 - Share revenue with TxDOT
 - Pay operations and maintenance costs
 - Share refinancing gains

All of which increase funds for transportation in Texas

Status

Comprehensive Developer Agreement

- TTC-35
 - Developer selected
 - Formulating Master Development Plan with TxDOT
- I-69/TTC
 - Imminent shortlist of Developer candidates
 - RFP being drafted



What's rail got to do with it ?



Tier One EIS

Seeking Final Study Area
suitable for build-out,
including 6 tracks

Tier Two EIS

Needs-based Alignment



Rail Demand in Texas

- NAFTA-

 - 68% truck-bound Mexico-US freight

 - Busiest rail crossings, 5 of 7 in Texas

- Terminal Congestion

 - San Antonio

 - Houston

 - Tower 55 - Ft. Worth

Mexico West Coast Ports

Port at Lazaro
Cardenas

KCS-M served

Port at Matzatlan

Available capacity

Needs improved
railroad in
Mexico





Is rail developing now ?

Cintra-Zachry requested/received
“Ready for Development” status

Double-track freight toll-railroad

Mexico-US border to Dallas-Ft. Worth

TxDOT starting S.T.B. application process



Conclusion

Trans-Texas Corridor is multi-mode

Demand for rail transport in Texas is growing

Texas gateway for NAFTA, Asian Trade

Inherent efficiency of rail

TTC-35 Freight Rail is

“Ready for Development”

FOR MORE INFORMATION:

www.KeepTexasMoving.org

